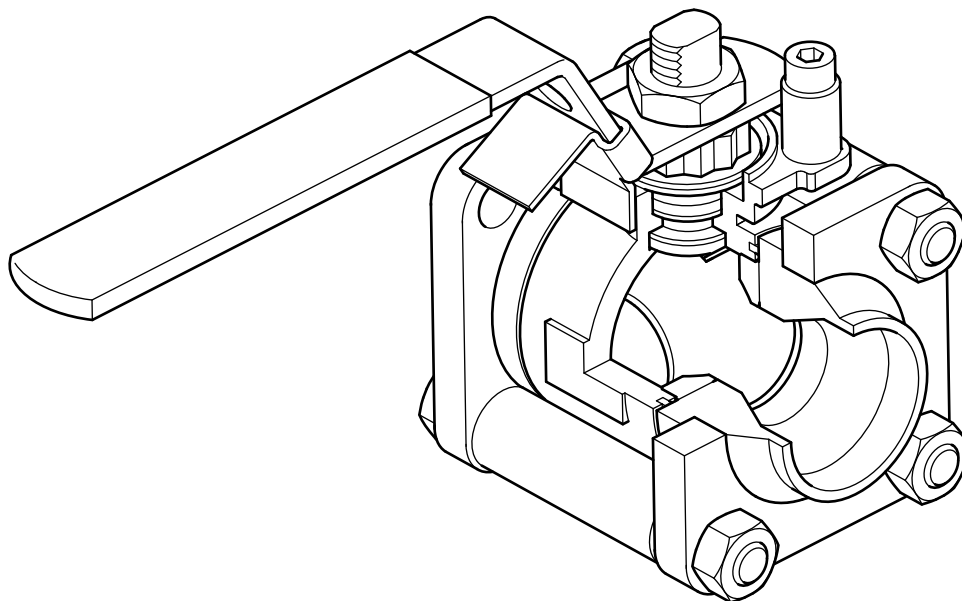




M16Vi ISO Ball Valve 3/8" to 2"



Description

The M16Vi ISO ball valve has been designed for use as an isolating valve, has a lockable handle as standard and can be serviced without removal from the pipeline. It can be used for steam and other industrial fluids.

ISO mounting

The integral ISO body mounting allows the valve to be automated without losing sealing integrity, as the body does not require disassembly. Manual to remote control may therefore be easily accomplished by the use of ISO range of actuators.

Available types

M16Vi4 ISO Stainless steel body, PTFE seat.

Standards

This product fully complies with the requirements of the EU Pressure Equipment Directive (PED) and UK Pressure Equipment (Safety) Regulations (PER).

Technical data

Flow characteristic	Modified linear
Port	Reduce and full bore versions
Leakage test procedure to ISO 5208 (RATE A) /EN 12266-1(RATE A)	

Options

Operation by pneumatic actuator BVA300 series for all sizes.

Size and pipe connections

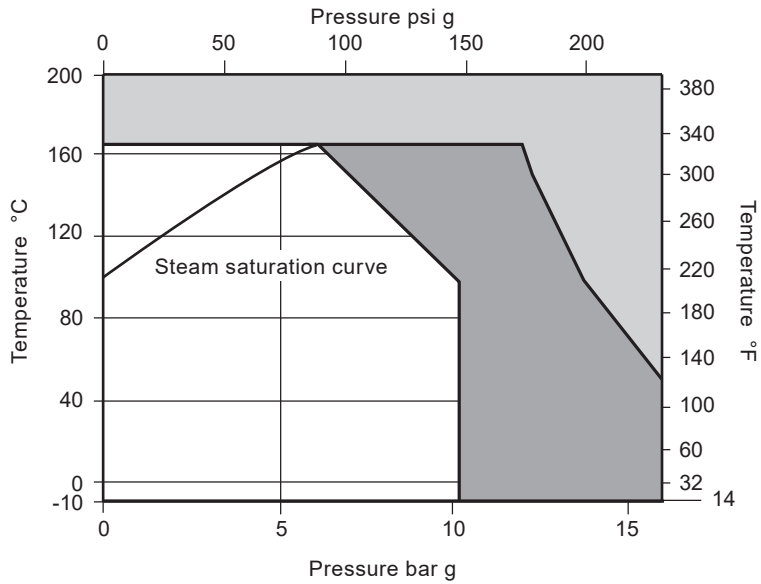
Screwed BSP and welded BW.

Reduce Bore: 1/2", 3/4", 1", 1 1/4", 1 1/2" and 2"

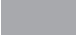
Full Bore: 3/8", 1/2", 3/4", 1", 1 1/4" and 1 1/2"

BSP, BW

Pressure/temperature limits

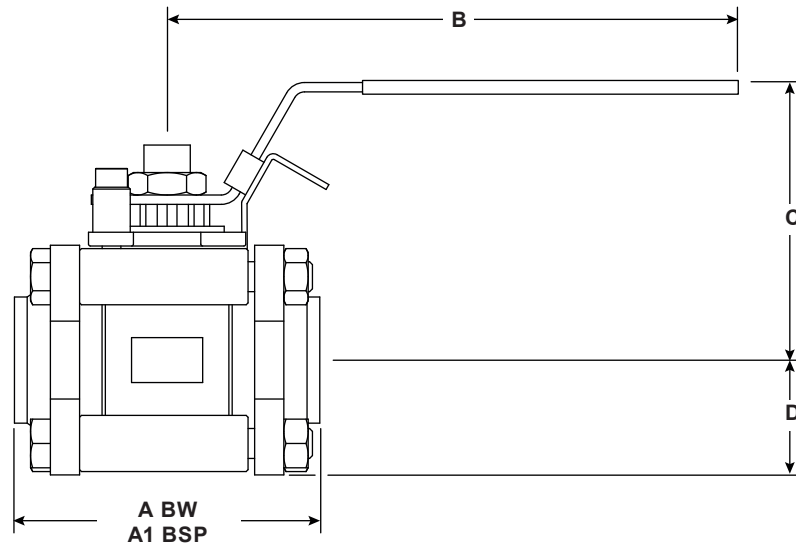


 The product **must not** be used in this region.

 The product should not be used in this region or beyond its operating range as damage to the internals may occur.

Body design conditions		PN16
PMA	Maximum allowable pressure	16 bar @ 50 °C 232 psi g @ 122 °F
TMA	Maximum allowable temperature	165 °C @ 6 bar g 329 °F @ 87 psi g
Minimum allowable temperature		-10 °C 14 °F
PMO		10 bar g @ 100 °C 145 psi g @ 212 °F
Maximum operating pressure for saturated steam service		6 bar g 87 psi g
TMO	Maximum operating temperature	165 °C @ 6 bar g 329 °F @ 87 psi g
Maximum differential pressure is limited to the PMO		
Designed for a maximum cold hydraulic test pressure		24 bar g 348 psi g

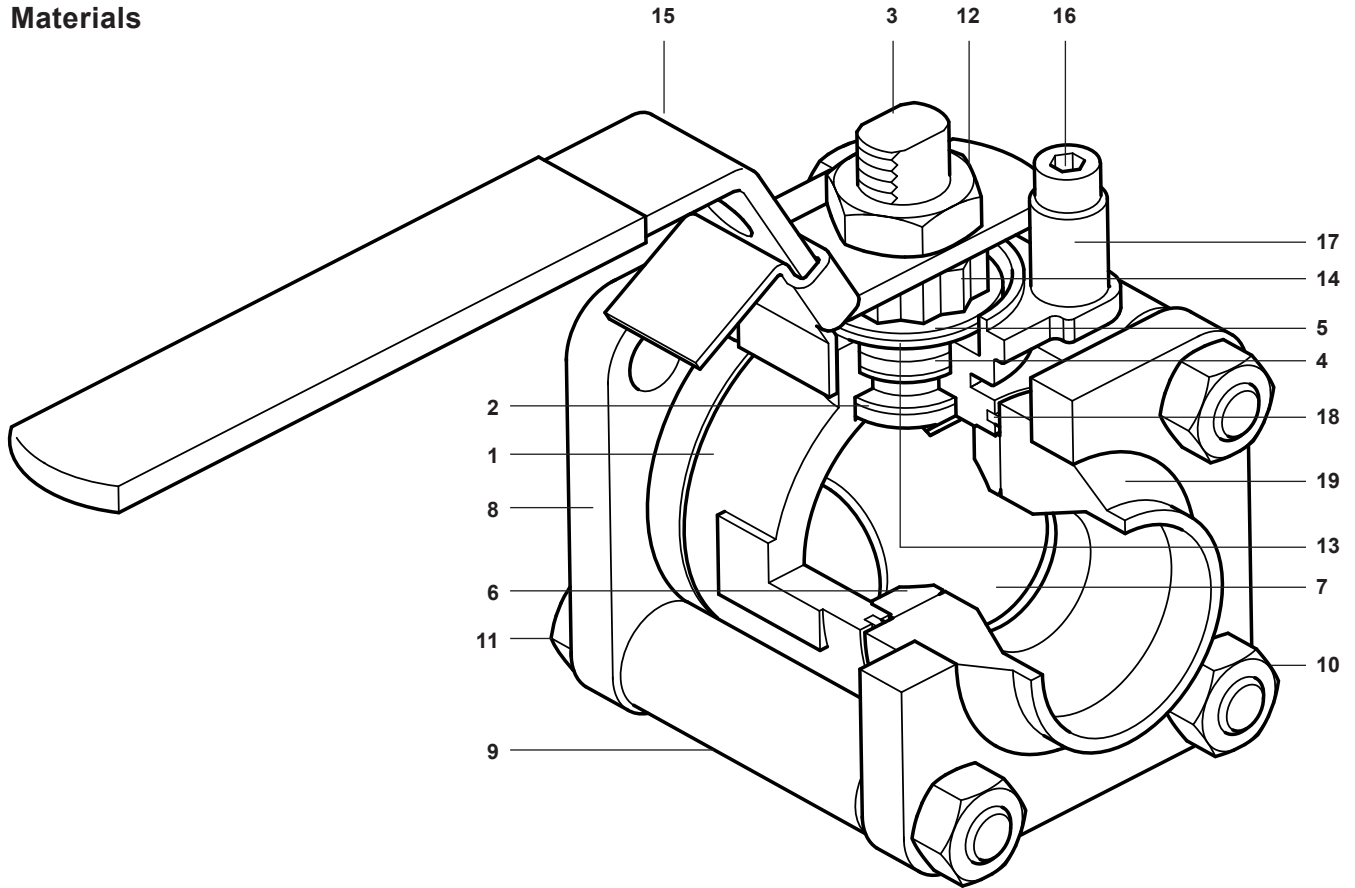
Dimensions/weights (approximate) in mm and kg



Size	RB	A	A1	B	C	D	Weight
1/2"	DN15	65	77	125	56	21	0.6
3/4"	DN20	70	87	125	60	25	0.8
1"	DN25	80	100	150	69	32	1.3
1 1/4"	DN32	100	110	150	75	35.5	1.8
1 1/2"	DN40	110	130	192	94	40.5	2.8
2"	DN50	125	145	192	102	45	3.9

Size	FB	A	A1	B	C	D	Weight
3/8"	DN10	65	65	125	56	21	0.6
1/2"	DN15	70	70	125	60	25	0.8
3/4"	DN20	80	90	150	69	32	1.3
1"	DN25	100	100	150	75	35.5	1.8
1 1/4"	DN32	110	120	192	94	40.5	2.8
1 1/2"	DN40	125	135	192	102	45	3.9

Materials



No.	Part	Material	
1	Body	Stainless steel	EN 10213 1.4308
2	Stem gasket	RPTFE	
3	Stem	Stainless steel	ASTM A276 304
4	Packings	Graphite reinforced PTFE	
5	Spring washer	Spring Steel	60Si2MnA
6	Seat	PTFE	
7	Ball	Stainless steel	ASTM A276 316L
8	Flange	Stainless steel	ASTM A276 304
9	Plastic pipe	Nylon	
10	Nut	Stainless steel	BS EN ISO 3506 A2-70
11	Bolt	Stainless steel	BS EN ISO 3506 A2-70
12	Stem nut	Stainless steel	SUS 304
13	Gland ring	Stainless steel	ASTM A276 304
14	Nut locking plate	Stainless steel	ASTM A276 304
15	Lever	Stainless steel	ASTM A276 304
16	Limiter bolt	Stainless steel	SUS 304
17	Limiter	Stainless steel	ASTM A276 304
18	Flange seal ring	PTFE	
19	Connector	Stainless steel	ASTM A276 304

K _v values	Size	RB	1/2"	3/4"	1"	1 1/4"	1 1/2"	2"	For conversion: C _v (UK) = K _v x 0.963 C _v (US) = K _v x 1.156
		FB	3/8"	1/2"	3/4"	1"	1 1/4"	1 1/2"	
	Value		5.5	11.7	22.3	31.7	62.2	109.7	

Operating torque (Nm)	Size	RB	1/2"	3/4"	1"	1 1/4"	1 1/2"	2"
		FB	3/8"	1/2"	3/4"	1"	1 1/4"	1 1/2"
	Value		2.5	4.5	5.5	10	18.5	32

Safety information, installation and maintenance

For full detail see the Installation and Maintenance Instructions supplied with the product.

How to order example: 1 off Spirax Sarco 1" BW M16Vi4 RB ISO ball valve.

Note:

Valves with threaded BSP connections are supplied assembled and ready to install.

Valves with welding BW connections are supplied disassembled (after being tested) in a box.

Reference on how to install each variant are detailed in the Installation and Maintenance Instructions supplied with the product.

Spare parts

The spare parts available are shown in solid outline. Parts drawn in a grey line are not supplied as spares.

Available spares

Stem gasket, packing, seat and flange seal ring and **2,4,6,9 and 18** plastic pipe

How to order spares

Always order spares by using the description given in the column headed "Available spares" and state the size and type of ball valve.

Example: 1 Spare kit for a 1" BW M16Vi4 RB ISO ball valve.

