

# 150L

Plain	Flap	Ball	Spinner
Stainless	Mica plate	Protective wire mesh	(With protective cover)

## ■Features

1. Mixed state or color of two component fluid can be checked.
2. Intermittent fluid flow can be checked.
3. Can be connected to horizontal/vertical piping.
4. Mica plate is required for steam condensate.
5. The 150L Series sight glass come in a variety of materials, including ductile cast iron and cast stainless steel, which are available to choose from.

## ■Specifications

Model	150L-F	150L-13S	150L-13F
Application	Cold and hot water, Oil, Other non-dangerous fluids		
Nominal size	65A-150A	15A-50A	15A-100A
Maximum working pressure	1.0 MPa		
Max. temperature	150°C		
Max. thermal shock	100°C		
Material	Body	Ductile cast iron	Cast stainless steel
	Glass	Hardened glass	
Connection	JIS 10K FF flanged	JIS Rc screwed	JIS 10K FF flanged

- Available with mica plate for steam condensate. However, maximum allowable working pressure is 0.6 MPa.
- Available with protector (150LP-□□S-□□F).
- Glass part is consumable parts.

## ■Dimensions (mm) and Weights (kg)

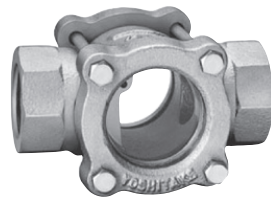
### · 150L-13S

Nominal size	d	L	W	Weight
15A	Rc 1/2	76	35	0.73
20A	Rc 3/4	89	35	0.82
25A	Rc 1	114	44	1.5
32A	Rc 1-1/4	127	53	2.3
40A	Rc 1-1/2	140	57	2.9
50A	Rc 2	162	73	5.8

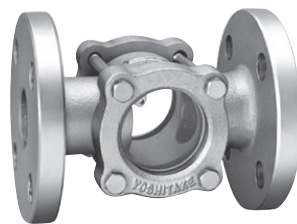
### · 150L-F-150L-13F

Nominal size	d	L	W	Weight	
				150L-F	150L-13F
15A	15	130	35	-	2.12
20A	20	130	35	-	2.47
25A	25	150	44	-	4.1
32A	32	160	53	-	5.4
40A	40	170	57	-	5.6
50A	50	200	73	-	9.7
65A	65	235	97	14.7	16.0
80A	73	235	97	15.1	16.5
100A	100	277	130	26.5	29.2
125A	125	336	155	36.8	-
150A	140	380	165	60.5	-

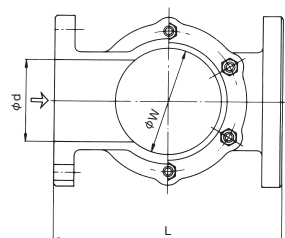
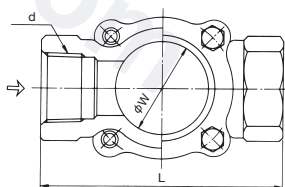
\* For 150L-F, it is available from 65A to 150A. For 150L-13F, it is available from 15A to 100A.



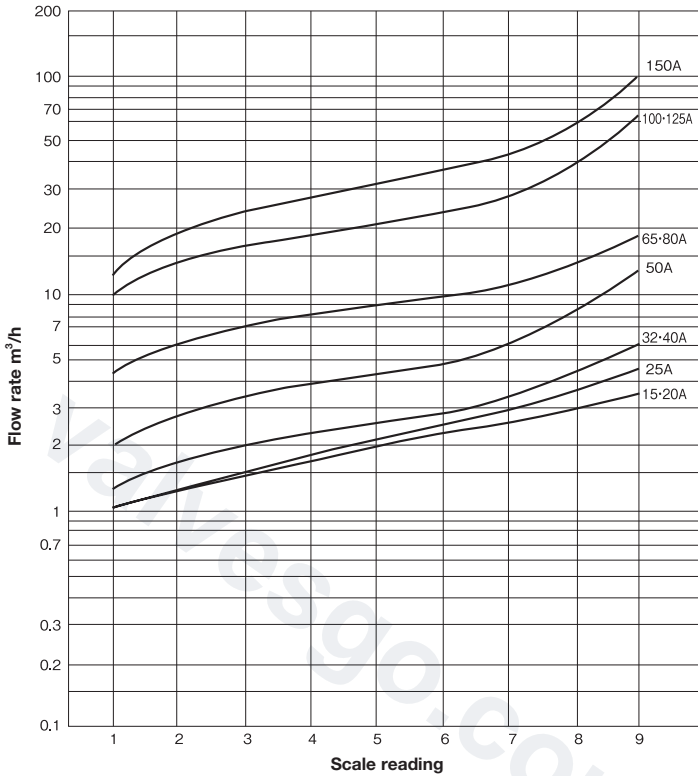
150L-13S



150L-F-150L-13F



■ Flow Rate Characteristics Chart (For Water, Horizontal Piping)



· The flow characteristics shown in the chart are just for reference and cannot be used for actual measurement.

Sight glass model (type 150) code

