

BFV-1S

■ Features

- BFV-1S is a high performance butterfly valve with stainless steel body.
- Double-eccentric structure provides excellent sealing and long service life.

■ Specifications

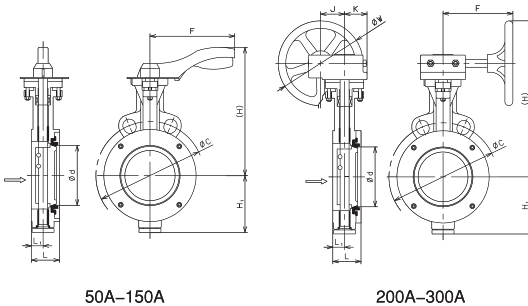
Model		BFV-1S
Nominal size		50-150A (lever operated), 200-300A (gear operated)
Application fluid		Steam, air, water, oil and other non-dangerous fluids
Maximum pressure Maximum temperature		According to the pressure-temperature rating
Material	Body	Stainless steel
	Disc	Stainless steel
	Seat	PTFE
Connection		Wafer (connectable to JIS10K, ASME Class 150 and EN PN16 flanges)



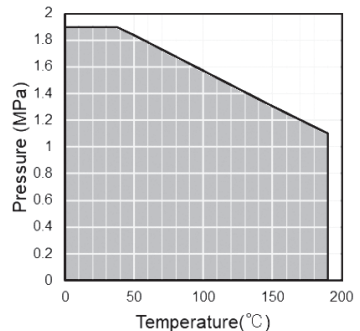
■ Dimensions (mm) and Weight (kg)

Nominal size	d	L	L1	H	H1	F	C			Weight (kg)
							JIS 10K	EN PN16	ANSI 150	
50A	50	43	18	212	72	210	120	125	120.5	3.5
65A	59	49	22	227	80	210	140	145	139.5	4.5
80A	72	49	22	237	87	210	150	160	152.5	5
100A	96	54	23	252	102	210	175	180	190.5	7
125A	120	56	24	273	120	250	210	210	216	9
150A	142	56	24	295	132	250	240	240	241.5	12

Nominal size	d	L	L1	H	H1	F	J	K	W	C			Weight (kg)
										JIS 10K	EN PN16	ANSI 150	
200A	190	64	27	306	167	210	53	57	260	290	295	298.5	24
250A	238	71	32	370	205	210	66	77	300	355	355	362	40
300A	282	81	36	407	245	210	66	77	300	400	410	432	55



■ Pressure Temperature Rating



Use the valve within this range.