

EB-1J,2J,1JL,2JL

Bellows

Sleeve

Ball

Single type

Double type

PTEE

Copper pipe

■Features

1. Simple structure since flange, short pipe and bellows are united.
2. Outer pipe is attached in order to protect the bellows from damage due to external impact.
3. Stainless steel inner pipe is attached in order to prevent fluid pressure loss, vibration, impact, corrosion, etc.
4. Stainless steel made wetted parts offer high resistance to corrosion and ensures distinguished durability.
5. EB-1JL and 2JL, use a loose flange on the end connection and can absorb the displacement of the circumference side of the bolt hole.



EB-1J



EB-2J



EB-1JL



EB-2JL

■Specifications

| Model | EB-1J | EB-1JL | EB-2J | EB-2JL |
|----------------------|---------------------------------------------------------------------------------------|-----------------------|--------------------|-----------------------|
| Application | Steam, Air, Cold and hot water, Oil, Other non-dangerous fluids | | | |
| Maximum pressure | 1.0 MPa | | | |
| Max. temperature | 220°C | | | |
| Max. axial extension | 35 mm (Expansion 10 mm Compression 25 mm) 70 mm (Expansion 20 mm Compression 50 mm) * | | | |
| Material | Outer pipe | | | |
| | Carbon steel | | | |
| Connection | Bellows, inner pipe | | | |
| | Stainless steel (SUS316L) | | | |
| | JIS 10K FF flanged | JIS 10K loose flanged | JIS 10K FF flanged | JIS 10K loose flanged |

* Expansion of one side from the centering anchor base is 10 mm and compression is 25 mm.

· Available with all stainless steel made.

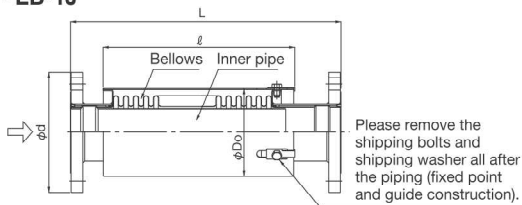
· Available with nominal size from 300A to 450A. (Single type: EB-3, Double type: EB-4)



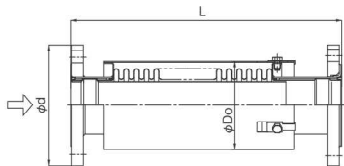
EB-3

■ Dimensions (mm) and Weights (kg)

· EB-1J



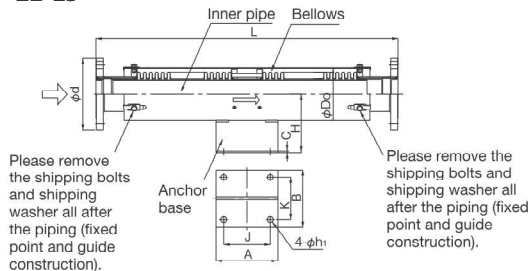
· EB-1JL



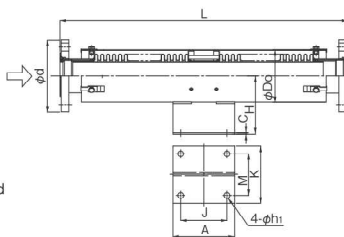
| Nominal size | L | Max. operating length | Min. operating length | Max. axial extension δ | Do | d | l | Weight |
|--------------|-----|-----------------------|-----------------------|-------------------------------|-------|-----|-----|--------|
| 20A | 365 | 375 | 340 | 35 | 58.2 | 100 | 235 | 2.6 |
| 25A | 365 | 375 | 340 | 35 | 58.2 | 125 | 235 | 3.3 |
| 32A | 365 | 375 | 340 | 35 | 73.2 | 135 | 235 | 4.8 |
| 40A | 365 | 375 | 340 | 35 | 73.2 | 140 | 235 | 5.0 |
| 50A | 365 | 375 | 340 | 35 | 98.2 | 155 | 239 | 5.7 |
| 65A | 415 | 425 | 390 | 35 | 109.7 | 175 | 289 | 8.9 |
| 80A | 415 | 425 | 390 | 35 | 135.7 | 185 | 288 | 10.1 |
| 100A | 415 | 425 | 390 | 35 | 161.7 | 210 | 288 | 11.0 |
| 125A | 440 | 450 | 415 | 35 | 212.1 | 250 | 292 | 21.0 |
| 150A | 440 | 450 | 415 | 35 | 235.1 | 280 | 293 | 26.3 |
| 200A | 440 | 450 | 415 | 35 | 291.6 | 330 | 280 | 35.3 |
| 250A | 465 | 475 | 440 | 35 | 332.6 | 400 | 287 | 52.5 |

· Available with nominal size from 300A to 450A (EB-3).

· EB-2J



· EB-2JL



| Nominal size | L | Max. operating length | Min. operating length | Max. axial extension δ | Do | d | Dimensions of anchor base-JIS B 2352 | | | | | | | Bolt size | Weight |
|--------------|-----|-----------------------|-----------------------|-------------------------------|-------|-----|--------------------------------------|-----|-----|-----|-----|-----|----------------|-----------|--------|
| | | | | | | | H | J | K | A | B | C | h ₁ | | |
| 20A | 680 | 700 | 630 | 70 | 58.2 | 100 | 100 | 100 | 60 | 135 | 95 | 3.2 | 12 | M10 | 4.6 |
| 25A | 680 | 700 | 630 | 70 | 58.2 | 125 | 100 | 100 | 60 | 135 | 95 | 3.2 | 12 | M10 | 5.5 |
| 32A | 680 | 700 | 630 | 70 | 73.2 | 135 | 120 | 100 | 70 | 135 | 105 | 3.2 | 12 | M10 | 6.7 |
| 40A | 680 | 700 | 630 | 70 | 73.2 | 140 | 120 | 100 | 70 | 135 | 105 | 3.2 | 12 | M10 | 7.0 |
| 50A | 680 | 700 | 630 | 70 | 98.2 | 155 | 130 | 100 | 80 | 140 | 120 | 3.2 | 15 | M12 | 9.8 |
| 65A | 780 | 800 | 730 | 70 | 109.7 | 175 | 140 | 120 | 100 | 160 | 140 | 4.0 | 15 | M12 | 11.1 |
| 80A | 780 | 800 | 730 | 70 | 135.7 | 185 | 150 | 120 | 110 | 160 | 150 | 4.0 | 15 | M12 | 12.6 |
| 100A | 880 | 900 | 830 | 70 | 161.7 | 210 | 170 | 120 | 130 | 160 | 175 | 4.0 | 19 | M16 | 16.3 |
| 125A | 880 | 900 | 830 | 70 | 212.1 | 250 | 200 | 120 | 150 | 175 | 205 | 4.0 | 19 | M16 | 34.5 |
| 150A | 930 | 950 | 880 | 70 | 235.1 | 280 | 220 | 160 | 180 | 215 | 235 | 4.5 | 23 | M20 | 41.6 |
| 200A | 930 | 950 | 880 | 70 | 291.6 | 330 | 250 | 160 | 220 | 215 | 285 | 4.5 | 25 | M22 | 59.9 |
| 250A | 980 | 1000 | 930 | 70 | 332.6 | 400 | 300 | 180 | 280 | 255 | 375 | 4.5 | 27 | M24 | 83.0 |

· Available with nominal size from 300A to 450A (EB-4).