

# FSJ-B



## ■Features

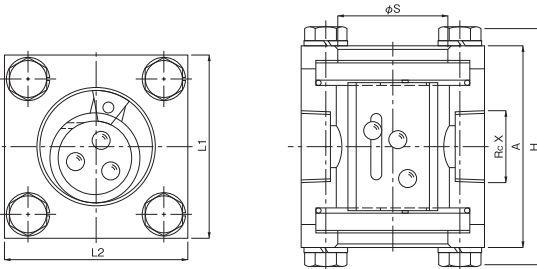
Compact type and even the small flow rate, it can be checked by the movement of the ball inside the product.



## ■Specifications

Application	Cold and hot water	
Maximum working pressure	0.7 MPa	
Max. temperature	60°C	
Material	Body	Stainless steel
	Glass	Hardened glass
	Ball	Polypropylene
Connection	JIS Rc screwed	

· Glass part and balls are consumable parts.



## ■Dimensions (mm) and Weights (kg)

Nominal size	L <sub>1</sub>	L <sub>2</sub>	S	A	H
10A	55	55	30	63	74
15A	60	60	35	66	77
20A	65	65	40	72	87
25A	70	70	45	83	98

Please fill in the usage conditions on the specification sheet on P.7-12 when ordering.