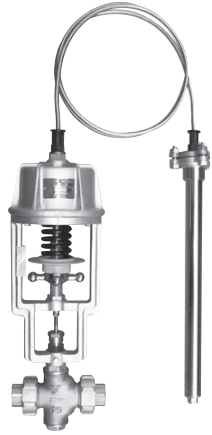


OB-1,1G

- Direct acting type
- Pilot operated type
- Heating**
- Cooling
- Bellows**
- Diaphragm
- Single valve
- Double valve**
- Soft seat



■Features

1. Easy plumbing due to union type connection screw.
2. No need for adjusting tool due to the attached adjusting handle, making adjustment easy.
3. Double valve structure offers larger flow rate than single valve type.
4. Excellent accuracy since special packing is used for spindle gland packing which affects opening/closing operation of the valve.
5. The OB-1G ensures distinguished temperature resistance due to external pressure type bellows.

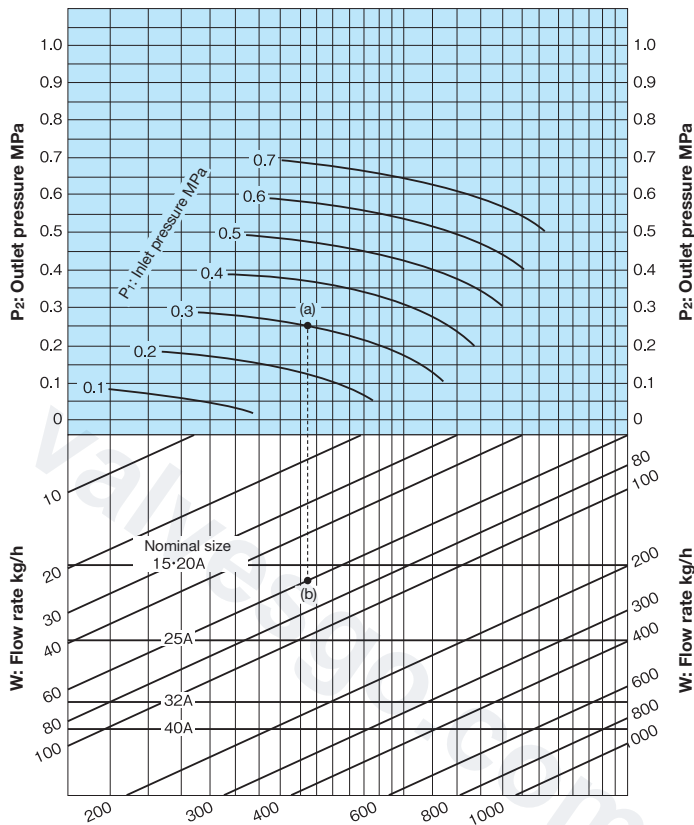
■Specifications

Model		OB-1	OB-1G
Application	Heating	Steam, Hot water	
	Heated	Cold and hot water, Oil, Non-dangerous fluids	
Maximum pressure	Body	0.7 MPa	
	Thermal bulb	1.0 MPa	
Max. temperature		180°C	
Temperature adjusting range	For liquid	40-120°C	15-100°C
	For air	40-120°C	15-100°C
Ambient temperature		Set temperature -10°C or less	Set temperature +30°C or less
Material	Body	Cast bronze	
	Valve	Bronze	
	Valve spindle	Stainless steel	
	Bellows	Phosphor bronze	
	Thermal bulb	Stainless steel	
Standard capillary length		2 m	
Connection		JIS Rc screwed (union joint)	

* Valve seat leakage: Refer to P.18-39.

- If the ambient temperature is higher than the set temperature or less than 40°C, use the OB-1G (with external pressure type bellows).
- Available with capillary of up to 5 meter. (Please refer to P.18-42 for errors of set temperature).
- Available with temperature adjusting range of 30°C. (For OB-1 only).
- Available with thermal well (SUS304 made or with a PTFE cap) for liquid.

■OB-1, 1G Nominal Size Selection Chart (For Steam)



How to use the chart

When selecting the nominal size of a temperature regulator whose inlet pressure (P₁), outlet pressure (P₂), and steam flow rate are 0.3 MPa, 0.25 MPa, and 60 kg/h, respectively, first find intersection point (a) of the inlet pressure of 0.3 MPa and the outlet pressure of 0.25 MPa. Trace down vertically from this intersection point (a) to find intersection point (b) with the flow rate of 60 kg/h.

Since this intersection point (b) lies between nominal sizes 15A or 20A and 25A, select the larger one, 25A.

* Chart of the flow rate is a reference value.